



ADVANCED MANUFACTURING

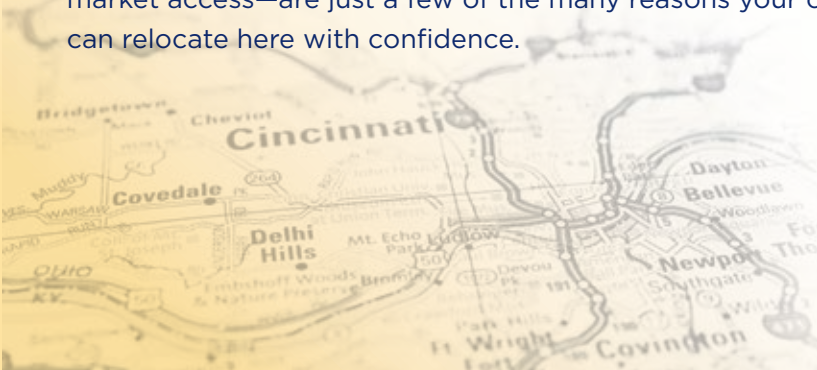
AEROSPACE | AUTOMOTIVE | FOOD & FLAVORING

THE CINCINNATI REGION

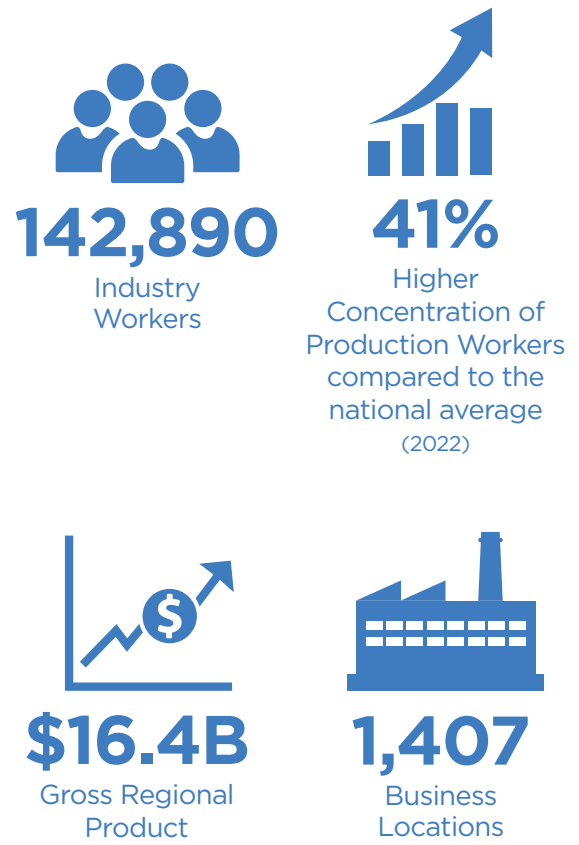
WHERE BUSINESS SUCCESS HAPPENS

The Cincinnati region is the place where people and businesses can dig in, make their mark, make a difference, chase a dream, and go beyond persevering to prospering. Our 15-county, three-state region sits at the heart of southwest Ohio, northern Kentucky, and southeast Indiana, making this the perfect intersection for economic development and growth.

The Cincinnati region offers one of the best ecosystems for manufacturers to thrive and grow. Regional growth in manufacturing has more than doubled the national average during the last five years. A fast-growing economy, 33% more workers, and one of the busiest inland ports—combined with skilled talent and strong market access—are just a few of the many reasons your company can relocate here with confidence.



CINCINNATI MSA MANUFACTURING SNAPSHOT



Source: Lightcast 2023.4

EXPAND, RELOCATE, AND GROW WITH CONFIDENCE

IN THE CINCINNATI REGION

The Cincinnati region fuels fast-growing companies that add jobs and capital investment to the economy. With the help of the business development experts at REDI Cincinnati, the below companies have shown significant growth in recent years.

UGN

111 new jobs; \$40.3M in capital investment

In 2018, UGN needed to expand one of two facilities in either Indiana or Ohio. Ultimately, UGN chose its Monroe, Ohio, location, increasing the size of the 232,000-square-foot facility's building by 154,000 square feet to help UGN supply Toyota and Subaru. The expansion added 111 new team members and nearly \$6M in salaries in the region.

HERITAGE BAG

69 new jobs; \$1.9M new payroll

In 2020, Heritage Bag was looking to re-configure their space, purchase equipment, and convert existing product lines to add a new product for existing customers to their portfolio. Due to the COVID world pandemic, the organization re-engineered their extrusion machines in order to produce isolation gowns to help health care workers battle the virus. The re-tooling of these machines allowed the business to add an additional product to their portfolio as an option to their customers moving forward.

NESTLÉ PURINA PETCARE

300 new jobs; \$550M fixed asset investment

Nestlé Purina Petcare, an American subsidiary of Nestlé, based in St. Louis, MO, added Williamsburg Township to its 21 manufacturing locations with plans for its first new, ground-up factory project since 1975, part of a broader growth initiative to meet rising demand for high-quality pet nutrition. Purina management chose the location for its robust distribution network, high-potential workforce and strong community values, bringing 300 new jobs to the area.

Join these success stories and unlock your potential for expansion and growth in the thriving Cincinnati region. Your journey to success begins here.

NOTABLE REGIONAL MANUFACTURING OPERATIONS



Connect with us:

Trevor Wellbrock
Director,
Business Development

TWellbrock@REDICincinnati.com
D: (513) 579-3110
C: (859) 803-5743



REDI Cincinnati 3 East Fourth Street, Suite 301
Cincinnati, OH 45202-3728